

University System of Georgia  
Fall 2010, Institutional Research and  
Planning (IRP) Meeting

Presented by Chris Ferland  
USG, Office of Research and Policy  
Analysis (RPA)



NPC

# Background

- In accordance with the Higher Education



# Business Process

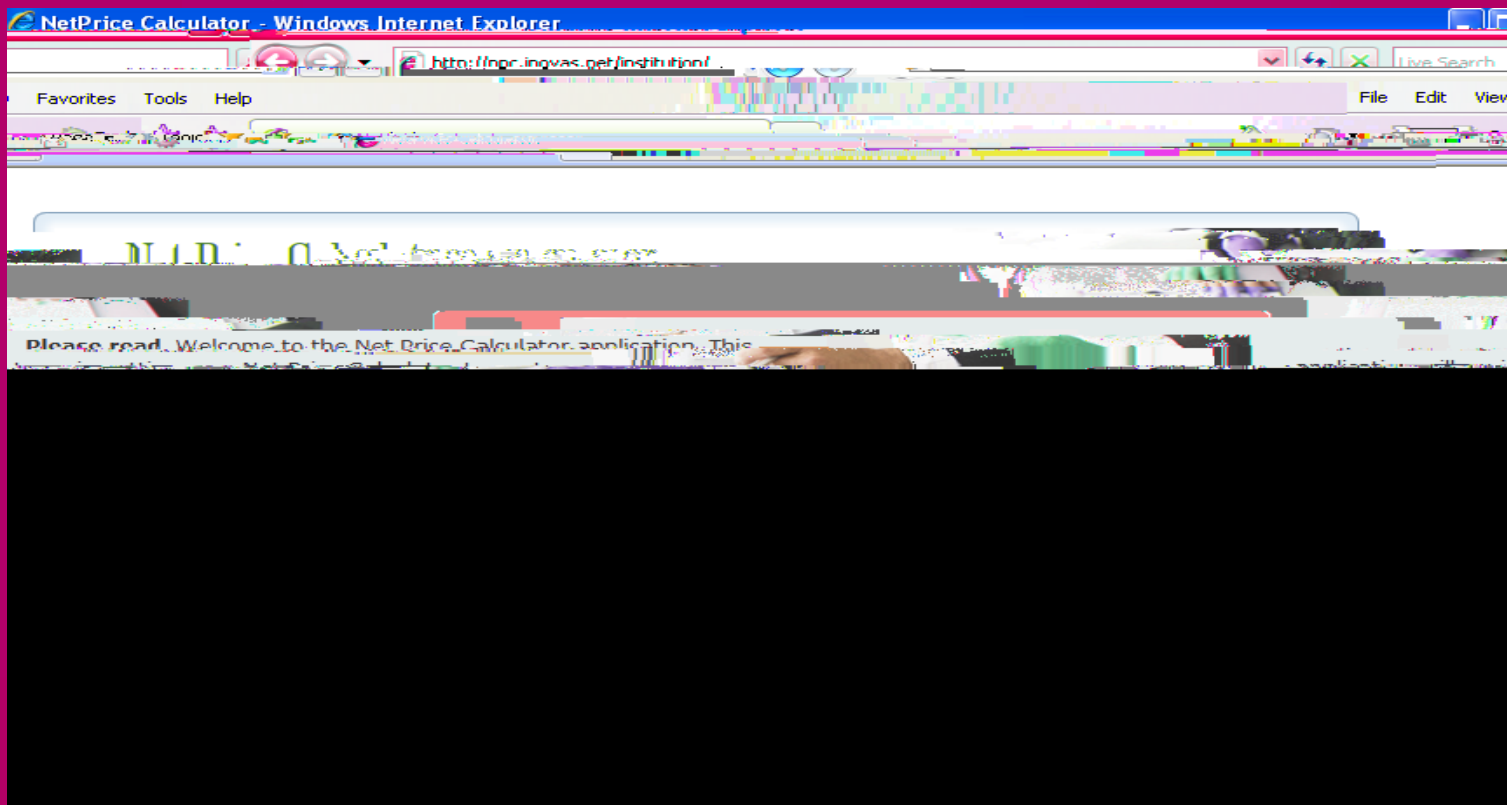
- Campuses can request a “Net Price Calculator Spreadsheet”: a summary of some your IPEDS data.
  - Request is made by submitting a ticket to the ITS helpdesk ([helpdesk@usg.edu](mailto:helpdesk@usg.edu)), for the USG123 “Academic Data Mart” team.
- Must request AFTER.....
  - The FISAP process (RORFSxx) has been ran.
  - The FARS Data Extraction process (ZORFARS) has been ran.

# Net Price Calculator Spreadsheet

	A	B	C	D	E	F	G
1	<b>Table 2: Grants &amp; Scholarships for Full-Time, First-Time Undergraduate Students</b>						
2	<b>Award Year = 0809</b>						
3	<b>Institution = State University</b>						
4							
5		<i>In-State</i>			<i>Out-of-State</i>		
6							
7		Off-campus	Off-campus		Off-campus	Off-campus	
8							
9							
10	\$0				5,868	5,868	5,868
11							
12	-2,500	9,899	9,576	9,626	4,031	2,116	\$1,000
13	-5,000	7,474	5,868	5,868	2,731		\$2,500
14	5,000	5,000	5,000	5,000			
15	5,000	5,000	5,000	5,000			
16	5,000	5,000	5,000	5,000			
17	5,000	5,000	5,000	5,000			
18	5,000	5,000	5,000	5,000			
19	5,000	5,000	5,000	5,000			
20	5,000	5,000	5,000	5,000			
21							
22							
23							
24							
25	Note: Values shown are median award amounts in whole dollars.						

# Business Process

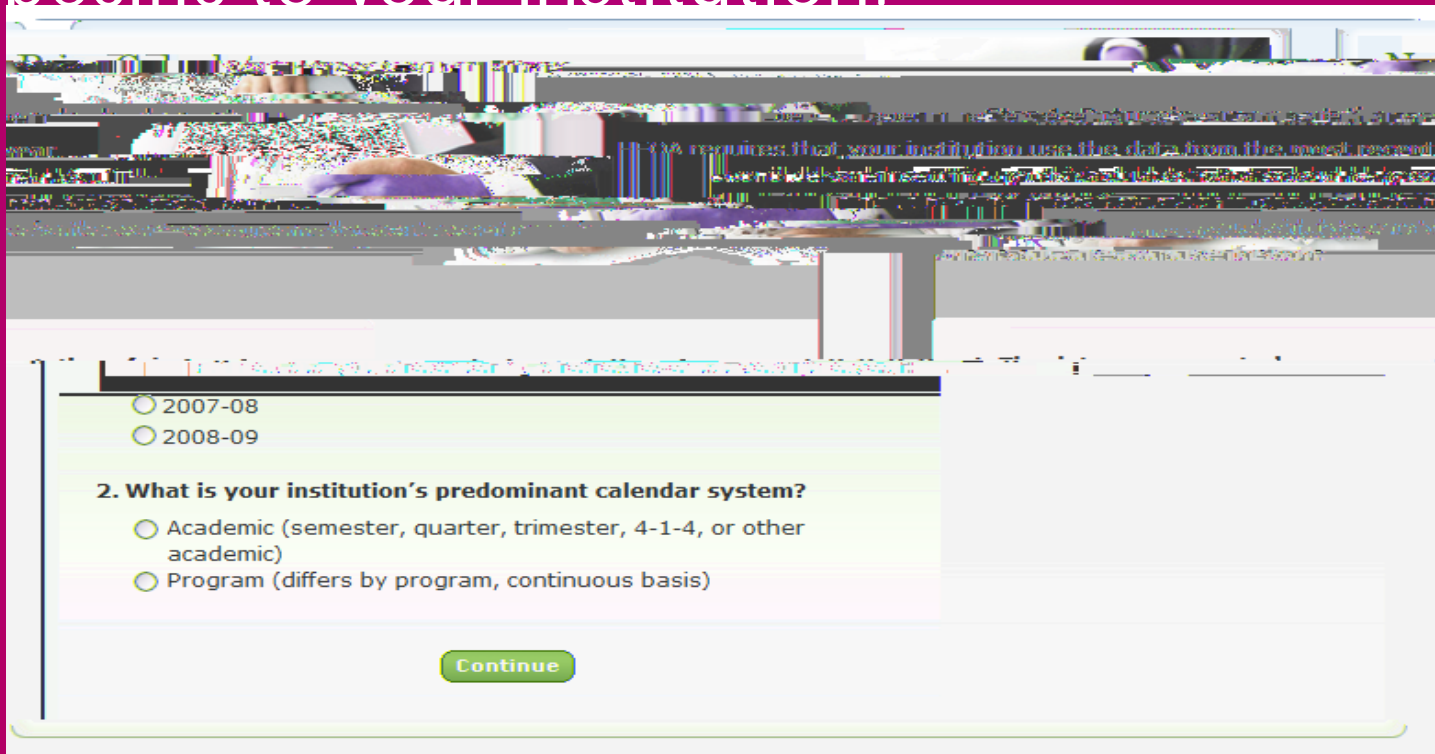
- Once you receive your "NPC Spreadsheet", access the online template via the following URL: <http://npc.inovas.net/institutions/>





# Business Process

- Next, you will be asked a series of questions, specific to your institution.



The image shows a screenshot of a survey form. At the top, there is a header with a background image of a large crowd of people. Below the header, there is a question: "2. What is your institution's predominant calendar system?". The question is followed by two radio button options: "Academic (semester, quarter, trimester, 4-1-4, or other academic)" and "Program (differs by program, continuous basis)". Above the question, there are two radio button options for the survey year: "2007-08" and "2008-09". At the bottom of the form, there is a green "Continue" button.

2007-08  
 2008-09

**2. What is your institution's predominant calendar system?**

Academic (semester, quarter, trimester, 4-1-4, or other academic)  
 Program (differs by program, continuous basis)

[Continue](#)



# Business Process

# Business Process

- For "Table 2", use the "Net Price Calculator Spreadsheet" to enter your data.

**Table 2: Grants and Scholarships for Full-time, First-time Undergraduate Students: 2008-09**

Enter the amounts requested below. Data should represent the **median** amount of both need and non-need grant and scholarship aid from Federal, State, or Local Governments or the Institution (exclude private source grant or scholarship aid), and accepted by, all first-time, full-time degree/certificate-seeking students with the indicated living and aid award preferences with Expected Family Contribution (EFC) range. If you have few or no BFC observations, you will need to report the median amount of grant or scholarships aid for students for whom you do not know an EFC (i.e., they did not file a FAFSA or apply for need-based financial aid).

Institution	In-state		Out-of-state	
	Off-campus	Off-campus	Off-campus	Off-campus
With Family				
Not with Family				

# Business Process

- Complete the remainder of the template and review the information you provided.

**Step 5: Create Calculator**

You have completed the data entry for the Net Price Calculator. Please review the information you have provided. If you are not happy with the current selections, click **Continue** to produce a report on your institution's website. (For detailed instructions on institution's website, please refer to the [Quick Start Guide](#) included with this template.)

Modify to return to Step 1 and edit this information, or if you are happy with the current selections, click **Continue** to produce a report on your institution's website. (For detailed instructions on institution's website, please refer to the [Quick Start Guide](#) included with this template.)

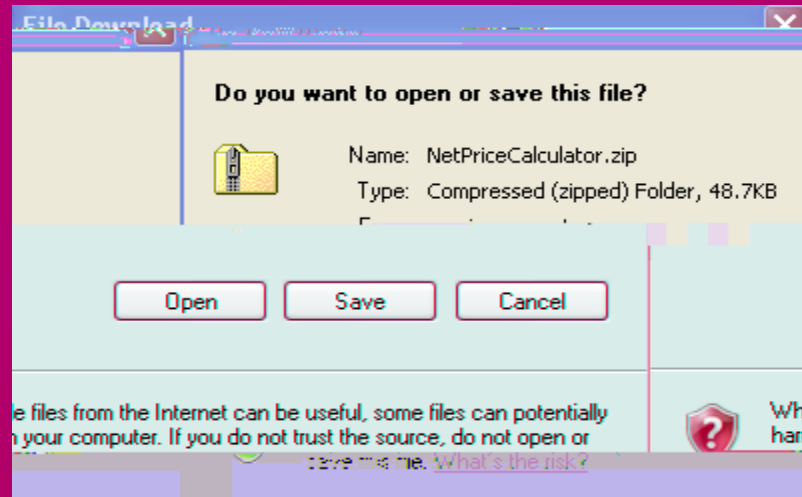
Representative Year: 2008  
 Predominant Calendar System: Acad  
 Institutionally Controlled Housing: No  
 Housing Requirement for Full-time, First-time Undergraduates: No  
 Tuition Based on Residency Status: Yes (In-state)

**Table 1: Price of Attendance for Full-time, First-time Undergraduate Students: 2008-09**

	In-district		Out-of-state				Price of Attendance	
	Off-campus	Off-campus with family	attendance	with family	not with family	with family	not with family	with family
<b>Total</b>	9900	13400	11500	11400	14900	15000		
tuition	2500	4000	4000					
fees	400	400	400				2500	2500
books and supplies	600	600	600				400	400
room and board							6000	6000
Other (personal, transportation, etc.)	2400	2400	2400				2000	2000

# Downloading the Net Price Calculator

- The Net Price Calculator online template will produce the popup below, allowing a .zip file to be downloaded. Administrators and staff responsible for maintaining your institution's Financial Aid web site can use the "npcalc.html" doc, included in the .zip file (NetPriceCalculator.zip) to incorporate into your web site.



RTTT









# Purpose

- Assess the state of retention, progression and graduation (RPG) across institutions
- Establish/clarify metrics for all institutions
- Identify 1, 2, & 3 year targets (some unchanged)
- Review institutional plans to meet targets
- Identify factors affecting RPG
- Provide guidance to USG presidents

# Methodology

- Presidential briefings by all 35 institutions over nine month period
- Return visits for schools with insufficient information
- 20 min briefs with 40 min discussion
- 10 page action plan submitted by each school
- Final presentation and report to BoR



# Bottom Line:

Presidential Leadership  
Student Engagement  
Resources

(people, money, space, & time)

# Common Concerns

- Institutional Research/Planning Offices  
(a.k.a., The Campus Data Office)
  - Understaffed
  - Used for Compliance reporting vs Data Analysis
- “Blame the Victim” mindset: Student are Under-prepared
- Focus on Headcount vs RPG (Historical)
- Proposed “Solutions” were related to poorly defined problems lacking practical application
- Shotgun approach to problem resolution

# Common Themes (cont'd)

-



# Areas of Excellence

- Learning Communities
- First Year programs—the “Fly Wheel”
- Mentoring /Advising by Faculty
- Peer (Student) mentoring
- Early identification/monitoring of “At-risk” students

# Task Force Recommendations

- BoR to tie resource allocation to RPG performance

MOWR

# New BP for Dual Enrolled

- Due to MOWR and new business process for dual enrollment has been established
  - Student type J has been replaced by D in on SAADMS and SGASTDN
  - This began in July with criteria determined by institution

FARS

# Recollect

- The EFC for 06-07, 07-08, & 08-09 is wrong due to an extraction issue off the table.
  - Excel sheets with SSNs per year will be provided
  - Please populate the EFC and housing information

Due date to be determined today